

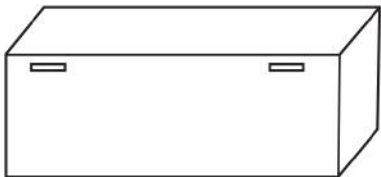
Convertible Table Cover Set-up Instructions

(converting from a 8' throw to 6' fitted cover or from a 6' throw to a 4' fitted cover)

1 STEP

Unfold table throw, Place table throw over 6' table. Position table throw with top seam at rear of table (as seen in fig.1).

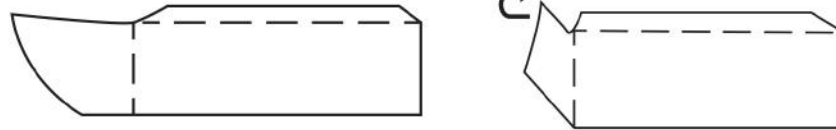
Figure 1 Back Side View



2 STEP

Grasp the velcro tab closest to front of table. Align fabric (as seen in fig.2) and begin rotating fabric toward the back of the table (as seen in fig.3).

Figure 2 Front Side View Figure 3 Front Side View



3 STEP

Wrap throw tightly around top edge of the table. Attach velcro hook tab to velcro loop tab on back of throw. Repeat process for other side of throw.

4 STEP

Attach remaining velcro hook tab (as seen in fig.4) and attach to velcro loop tab found underneath the top, back edge of table throw. Repeat process for other side of throw. The remaining fabric will be gathered neatly (as seen in fig.5).

Figure 4 Back Side View

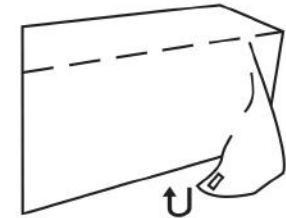
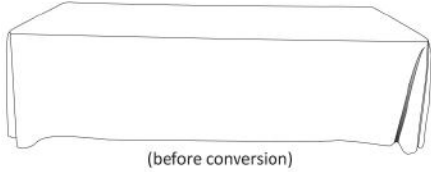


Figure 5 Back Side View



(before conversion)



(after conversion)

Convertible Table Throw Set-up Instructions

(converting from 8'throw to 6'throw)

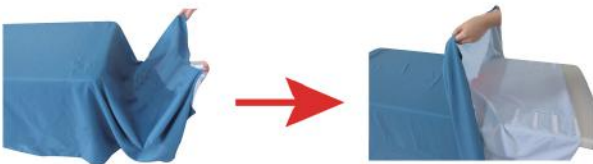
1 STEP

Spread a 8' table throw on a 6' table, after adjustment, you can find it's too big for the table.



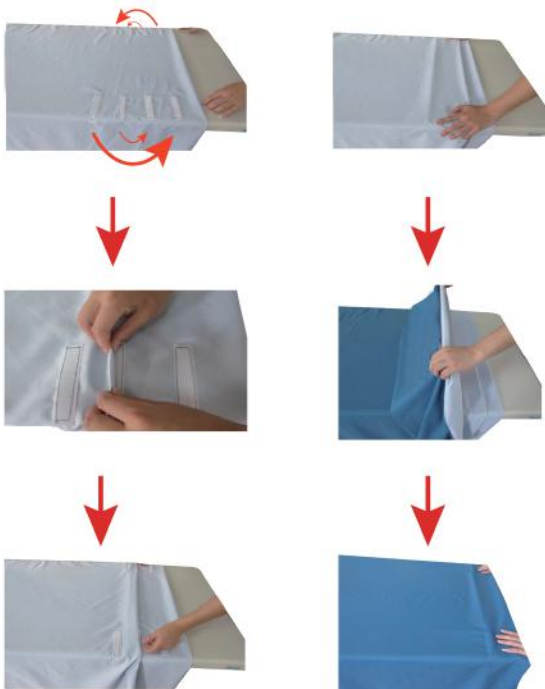
2 STEP

To make it fitting, turn over the throw at right side, and you can find 2 rows of velcro at back.



3 STEP

Attach the middle two velcros of both rows, then attach the first and last velcros as shown in the pictures.



4 STEP

Change another side, repeat step 2 and 3 at left side of table throw, and adjust it.

5 STEP

Finished!



(before conversion)



(after conversion)

Convertible Table Throw Set-up Instructions

(converting from 8'throw to 6'throw)

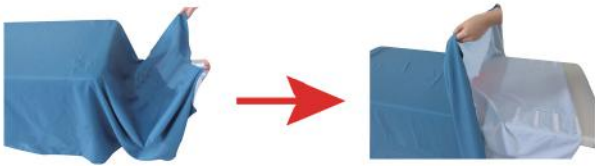
1 STEP

Spread a 8' table throw on a 6' table, after adjustment, you can find it's too big for the table.



2 STEP

To make it fitting, turn over the throw at right side, and you can find 2 rows of velcro at back.



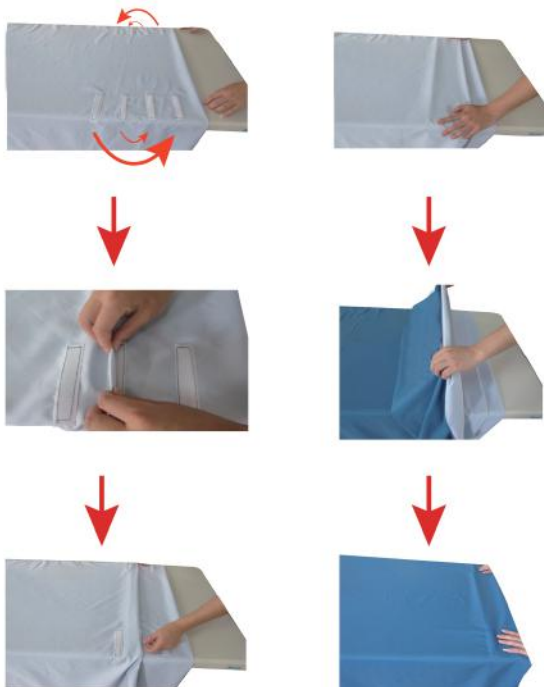
(before conversion)



(after conversion)

3 STEP

Attach the middle two velcros of both rows, then attach the first and last velcros as shown in the pictures.



4 STEP

Change another side, repeat step 2 and 3 at left side of table throw, and adjust it.

5 STEP

Finished!

